

PRIME DEVELOPMENT SITE

65-71 Glenwood Ave, Orange, NJ 07050



- Existing 3 family house on site
- Zoned residential
- 11 townhomes approved
- Can rezone for 100 unit multifamily
- RE Taxes – \$13,700
- Call for pricing

For Further Information and Inspection:

DAVID SARGOY

Director Comm'l RE Division
516.203.8134
dsargoy@bhsusa.com

MICHAEL BARUCH

Lic. Associate Broker
516.203.8150
mbaruch@bhsusa.com

Brown Harris Stevens Commercial Real Estate, LLC
585 Stewart Avenue, Suite 790, Garden City, New York 11530
Tel 516.203.8100 Fax 516.203.8199 Website www.BHScommercial.com

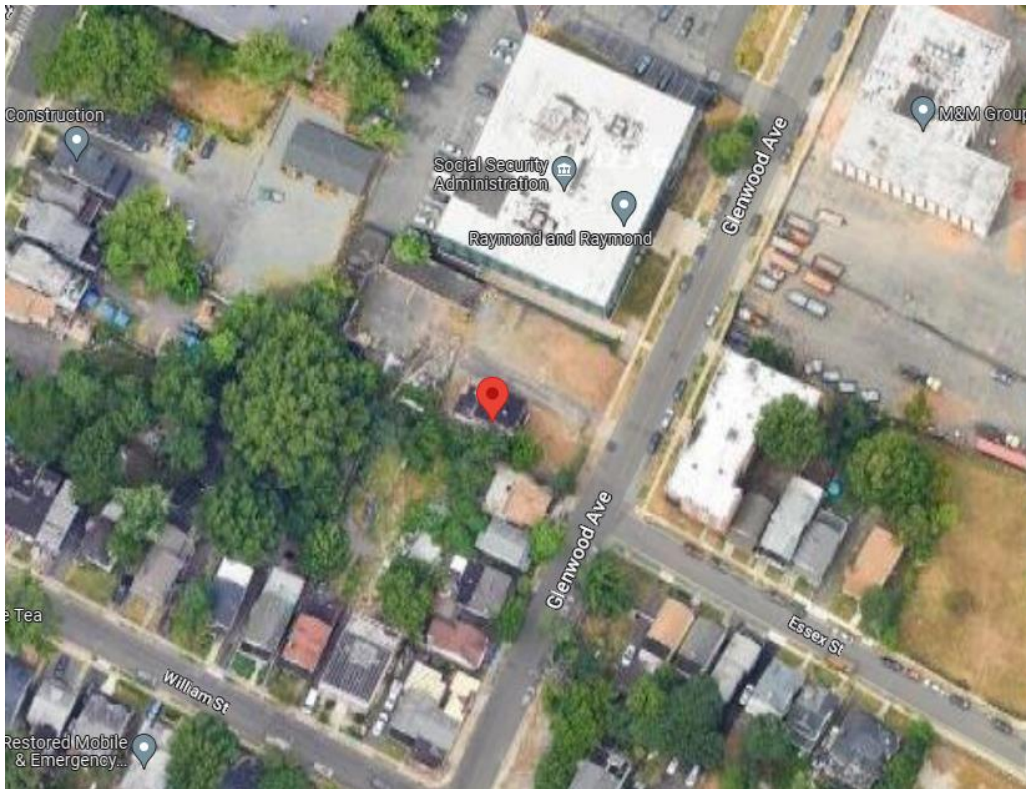
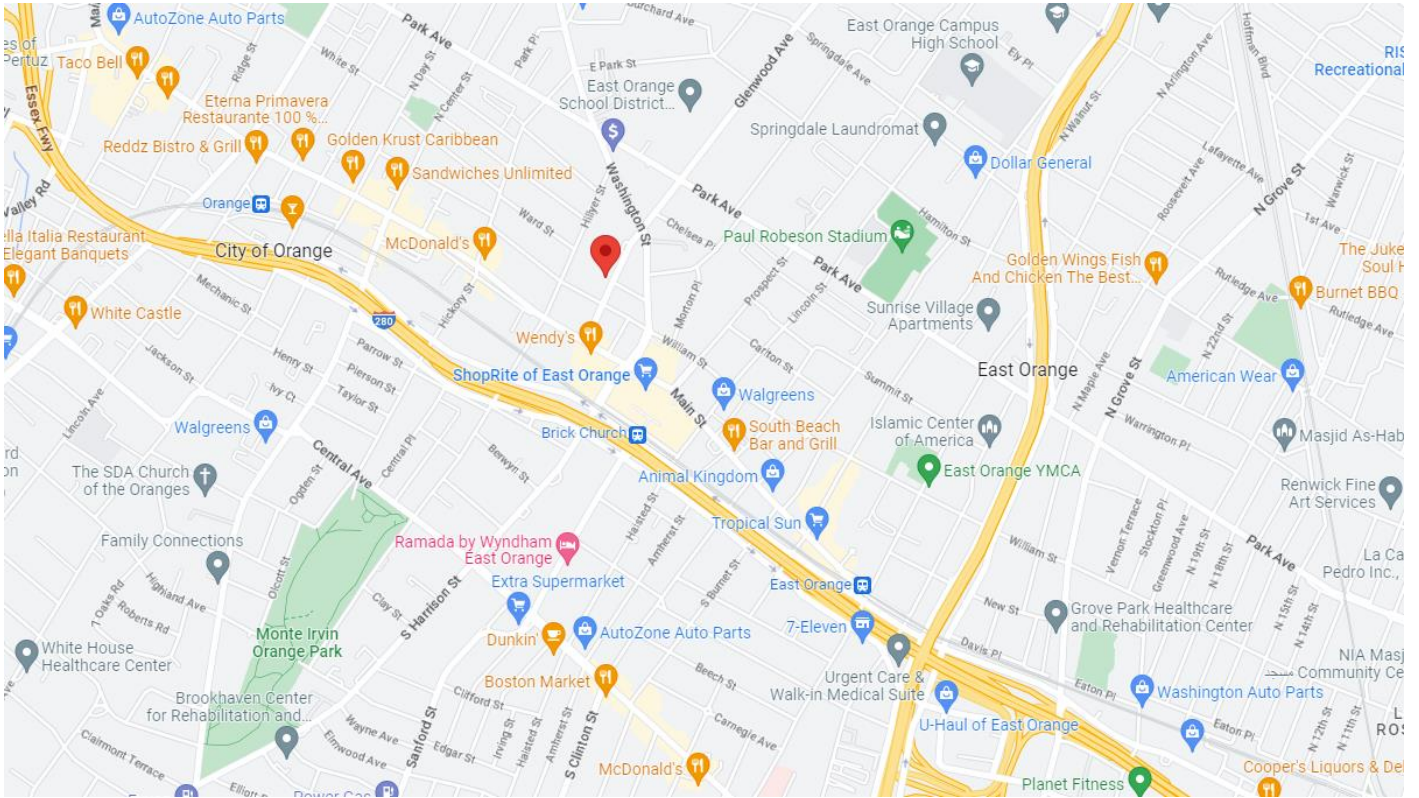
The foregoing is based on information obtained by BHS and believed to be reliable but no guarantee is made to its accuracy. No guarantee whatsoever is made as to the timing, amount or certainty of any sales projections or investor returns, which will depend on market conditions, project expenses, sales prices and other variables not presently ascertainable.

BROWN HARRIS STEVENS

Established 1873

Property Map

65-71 Glenwood Ave, Orange, New Jersey 07050



Brown Harris Stevens Commercial Real Estate, LLC
585 Stewart Avenue, Suite 790, Garden City, New York 11530
Tel 516.203.8100 Fax 516.203.8199 Website www.BHScommercial.com

The foregoing is based on information obtained by BHS and believed to be reliable but no guarantee is made to its accuracy. No guarantee whatsoever is made as to the timing, amount or certainty of any sales projections or investor returns, which will depend on market conditions, project expenses, sales prices and other variables not presently ascertainable.